

**POWER OF SALE
MULTI-RESIDENTIAL DEVELOPMENT LAND**



Architect's Rendering

728 - 744 DUNDAS ST., LONDON

Approximately 13,125 sq. feet

“As of Right Now” Zoning and
Bonus Zoning (See reverse for details)

Asking \$1,100,000

For Further Information Contact:

DALE BENSETTE*

dalebensette@royalpage.ca

ROBERT BREUER*

breuer@royalpage.ca

ROYAL LePAGE TRILAND REALTY,
BROKERAGE
PHONE: (519) 672-9881
FAX: (519) 672-4498
www.commercialsales.ca

COMMERCIAL GROUP

ROYAL LePAGE

TRILAND REALTY
REAL ESTATE BROKERAGE

334 WELLINGTON ROAD SOUTH
LONDON, ONTARIO
N6C 4P6

Independently Owned & Operated

* Broker

ROYAL LePAGE COMMERCIAL GROUP

DESCRIPTION:

This is an assembly of 4 properties totaling about 13,125 sq. ft. located along Dundas St. E. at the corner of English in London.

ZONING:

According to the City of London, the current zoning permits up to about 75 residential units for this site with a height restriction of 15 stories. However, if a builder were to construct a building along the idea of the architect's rendering shown on the front page of this flyer, then under an approved bonus zoning the City will permit up to 154 residential units plus 9 commercial unit as well as underground parking and green rooftop gardens and plantings. A Buyer will need to obtain independent verification of this from the City of London. Contact the listing agents for contact names at the City.

2010 TAXES:

Approx. 29,389 (to be independently verified and confirmed)

FINANCING:

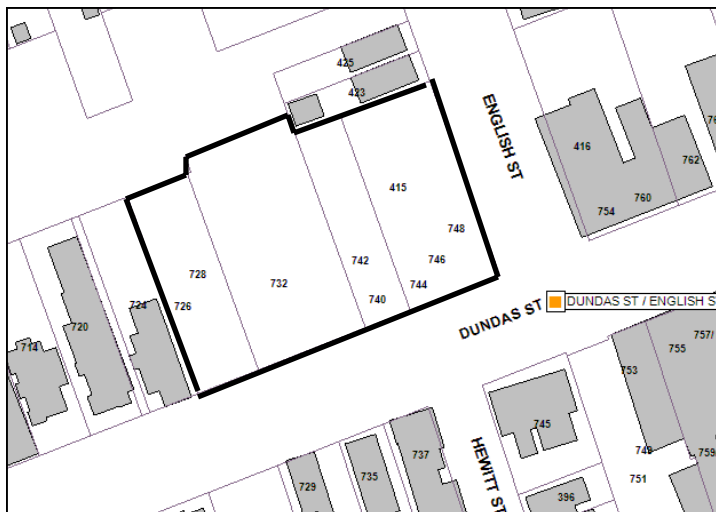
Treat as free and clear.

POWER OF SALE:

These properties are being sold under power of sale on an "as is, where is" basis without and any representations or warranties. Contact the Listing Agents for all the details and the Schedule of Power of Sale clauses.

PRICE:

\$1,100,000



DALE BENSETTE

dalebensette@royalpage.ca

ROBERT BREUER

breuer@royalpage.ca

ROYAL LePAGE TRILAND REALTY,
BROKERAGE

PHONE: (519) 672-9881

FAX: (519) 672-4498

www.commercialsales.ca

COMMERCIAL GROUP

ROYAL LePAGE
TRILAND REALTY
REAL ESTATE BROKERAGE

334 WELLINGTON ROAD SOUTH
LONDON, ONTARIO
N6C 4P6

Independently Owned & Operated

* Broker